



LightSource® LED Linear High Bay

DESCRIPTION

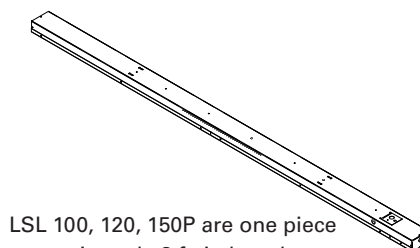
LightSource® LED Linear High Bay Fixtures with a 100,000 hour life are designed to replace existing High-intensity Discharge, T8 or T5 fluorescent aisle lights. Nothing can match the light distribution performance of this fixture in an aisle. Linear High Bay fixtures incorporate numerous patent-pending features that will deliver more usable footcandles with less energy input. This fixture is designed to be forward compatible for future Linear Fixture accessories. Constructed of 98% pure 3105 aluminum with a durable, composite polyester exterior finish. Black is standard for optimal thermal transfer.



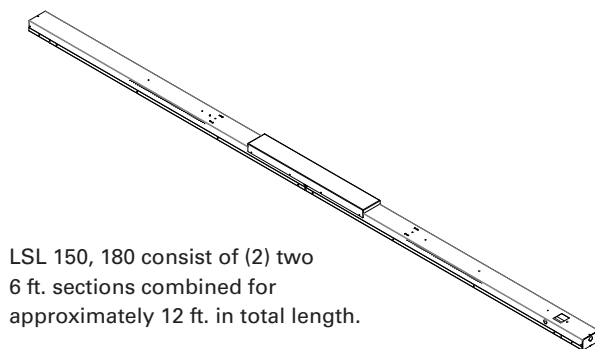
LightSource®
Linear LSL120
High Bay Fixture shown above
in Black, hardwire with 120W, 120-277V,
5000K LED light engine, clear lens. Hanging cables are
included, but not shown.

SPECIFICATIONS

	100	120	150P	150	180
Lumens:	12,000	14,400	15,950	18,000	21,600
Wattage:	100	120	150	150	180
Weight:	9.1 lbs			14.45 lbs	
Dimensions:	L 95.33" x W 4.38" x H 2.41"			L 144.23" x W 4.42" x H 3.18"	
Listed/Rated:	UL	UL, DLC	UL		
DLC Model #		LSL120-1UNCL-50xx			
Color Temp: 5000K					
CRI: >82					
Line Voltage: Universal 120-277V. 480V option.					
Power Supply: Hardwire standard					
Surge Protection: Integrated 2.5kV transient voltage protection (150P has 6kV transient voltage protection)					
Ambient Operating Temperature: -30° to 50° C / -22° to 122° F					
Environment: Damp rated					
Lens: Clear, optical grade Acrylic, resists common airborne water-based solvents. Other options available.					
Mount: 10 ft. Adjustable V-hook hangers included. Other options available.					
Warranty: 5-year Standard Limited					
Manufacturer: Genesis Energy Technology					



LSL 100, 120, 150P are one piece
approximately 8 ft. in length.



LSL 150, 180 consist of (2) two
6 ft. sections combined for
approximately 12 ft. in total length.



*Not all products are qualified on the DLC QPL. To view our DLC qualified products, please consult the DLC Qualified Products List at www.designlights.org/search.

LightSource® LED Linear High Bay

ORDERING INFORMATION

EXAMPLE: **LSL120-1UNCL-50BL-NSHW-MSXV10** Lead times and costs may vary depending on options selected. Consult your sales representative for more information. Standard configuration highlighted in Gray.

LSL										
Model	Wattage Code <small>(old code)</small>	Length	Voltage	Optics	Color Temp	Fixture Color	Surge	Power Supply	Motion Sensor	Mounting
LSL: LightSource	100: 100W (12L)	1: 8 ft.	UN: 120-277V	CL: Clear lens	50: 5000K	BL: Black	NS: 2.5kV int.	HW: Hardwire	MSX: No Sensor	V10: V-Hook with 10' adj. cables
	120: 120W (12LT)		48: 480V ²	F1: Frosted lens	40: 4000K	WH: White	WS: 10kA ext.	S4: Side 4-pin Winsta	MS1: 5 min/5hr	
	130: 130W							S5: Side 5-pin Winsta	MS2: 15 min/5 hr	CM: Ceiling Mount
	150P: 150W (16LT)	2: 12 ft. ¹						SM: Side Mate-N-Lok	MS3: 30 min/5 hr	NHH: None
	150: 150W (18L)								MS4: 5 min/1 hr	
	180: 180W (18LT)								MS5: 15 min/1 hr	
									MSC: Custom	

Specifications subject to change without notice.

¹ Consists of (2) two 6 ft. sections

² External transformer

Accessories

Power Supplies

Integrated quick connect to easily accommodate:

- Straight Blade
- Metal Clad
- Twist lock
- Winsta (WAGO)
- Mate-N-Lok
- ReLoc



480V

The external transformer attaches directly onto the LSL Linear fixture for 480V circuits. The quick connect easily accommodates the wiring.



Lens

Optical options:

- Frosted
- Clear
- Polycarbonate



www.sitlersledsupplies.com 319-653-2123

© 2017 SPEC LS Linear Sitler's 20171010



LightSource® I-Frame Series

DESCRIPTION

The LightSource® I-Frame Series of LED fixtures is designed to quickly and easily replace existing High-intensity Discharge, T8 and T5 fluorescent fixtures. Patent-pending thermal management ensures 100,000 hour life expectancy and lumen maintenance.

Lightweight and easily installed by one person. Constructed of 98% pure 3105 aluminum with a durable, composite polyester exterior finish. Black is standard for optimal thermal transfer.

Options for controls, sensors, power supplies, surge protection, 480V, battery backup, lenses, fixture color and mounting.



ORDERING INFORMATION

EXAMPLE: **LS215P-UNNL-50BL-NSHW-MSX-A10** Lead times and costs may vary depending on options selected. Consult your sales representative for more information. Standard configuration highlighted in Gray.

LS		UN							
Model	Arrays Wattage <small>(old code)</small>	Voltage	Optics	Color Temp	Fixture Color	Surge	Power Supply	Motion Sensor	Mounting
LS: LightSource	106: 1-array 60W <small>(06T)</small>	UN: 120-277V	NL: No Lens	50: 5000K	BL: Black	NS: 2.5kV int.	HW: Hardwire	MSX: No Sensor	A10: 10' Adj. cables
	12: 2-array 100W		F1: Frosted Lens	40: 4000K	WH: White	WS: 10kA ext.	S4: Side 4-pin Winsta	MS1: 5 min/5hr	NHH: None
	212: 2-array 120W <small>(12T)</small>		CL: Clear Lens				S5: Side 5-pin Winsta	MS2: 15 min/5 hr	
	215P: 2-array 150W <small>(16T)</small>						SM: Side Mate-N-Lok	MS3: 30 min/5 hr	
	18: 3-array 150W						BB: Battery backup ¹	MS4: 5 min/1 hr	
	318: 3-array 180W <small>(18T)</small>							MS5: 15 min/1 hr	
	415: 4-array 150W							MSC: Custom	
	24: 4-array 200W								
	424: 4-array 240W <small>(24T)</small>								
	30: 4-array 250W								
	530: 5-array 300W <small>(30T)</small>								
	430P: 5-array 300W <small>(32T)</small>								
	645: 6-array 450W <small>(48T)</small>								

Specifications subject to change without notice.

¹ Only for 120-277V Hardwire configuration.

LightSource® I-Frame Series

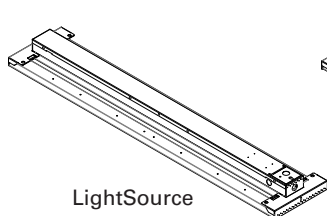
SPECIFICATIONS

	LS106	LS12	LS212	LS215P	LS18	LS318	LS415	LS24	LS424	LS30	LS530	LS430P	LS645P
Lumens:	7,200	12,060	13,890	15,950	18,220	20,660	19,630	23,974	27,500	30,000	34,400	33,070	54,664
Wattage:	60	100	120	150	150	180	150	200	240	250	300	300	450
Arrays:	1	2			3		4				5		6
Weight:	4.15 lbs	6.10 lbs			7.90 lbs		10.40 lbs			10.80 lbs	12.25 lbs		17.50 lbs
Dimen- sions:	L 46.102" x H 3.068" x W 9.910"						L 46.102" x H 3.068" x W 15.845"						L 46.148 H 3.068" W 24.00"
Listed/ Rated:	UL	UL, DLC											
DLC Model #		LS12-UNCL-40xx, LS12-UNCL-50xx LS12-UNF1-40xx, LS12-UNF1-50xx LS12-UNNL-40xx, LS12-UNNL-50xx	LS212-UNCL-40xx, LS212-UNCL-50xx LS212-UNF1-40xx, LS212-UNF1-50xx LS212-UNNL-40xx, LS212-UNNL-50xx	LS215P-UNCL-40xx, LS215P-UNCL-50xx LS215P-UNF1-40xx, LS215P-UNF1-50xx LS215P-UNNL-40xx, LS215P-UNNL-50xx	LS18-UNCL-40xx, LS18-UNCL-50xx LS18-UNF1-40xx, LS18-UNF1-50xx LS18-UNNL-40xx, LS18-UNNL-50xx	LS318-UNCL-40xx, LS318-UNCL-50xx LS318-UNF1-40xx, LS318-UNF1-50xx LS318-UNNL-40xx, LS318-UNNL-50xx	LS415-UNCL-40xx, LS415-UNCL-50xx LS415-UNF1-40xx, LS415-UNF1-50xx LS415-UNNL-40xx, LS415-UNNL-50xx	LS24-UNCL-40xx, LS24-UNCL-50xx LS24-UNF1-40xx, LS24-UNF1-50xx LS24-UNNL-40xx, LS24-UNNL-50xx	LS424-UNCL-40xx, LS424-UNCL-50xx LS424-UNF1-40xx, LS424-UNF1-50xx LS424-UNNL-40xx, LS424-UNNL-50xx	LS430P-UNCL-40xx, LS430P-UNCL-50xx LS430P-UNF1-40xx, LS430P-UNF1-50xx LS430P-UNNL-40xx, LS430P-UNNL-50xx	LS30-UNCL-40xx, LS30-UNCL-50xx LS30-UNF1-40xx, LS30-UNF1-50xx LS30-UNNL-40xx, LS30-UNNL-50xx	LS530-UNCL-40xx, LS530-UNCL-50xx LS530-UNF1-40xx, LS530-UNF1-50xx LS530-UNNL-40xx, LS530-UNNL-50xx	LS645P-UNCL-40xx, LS645P-UNCL-50xx LS645P-UNF1-40xx, LS645P-UNF1-50xx LS645P-UNNL-40xx, LS645P-UNNL-50xx
Color Temp: 5000K													
CRI: >82													
Line Voltage: Universal 120-277V. 480V transformer option.													
Power Supply: Hardwire standard. Includes internal quick connect to easily accommodate straight blade, metal clad, twist lock. Can accommodate Winsta (WAGO), ReLoc and Mate-N-Lok.													
Surge Protection: Integrated 2.5kV transient voltage protection. External 10kA surge protection option.													
Ambient Operating Temperature: -30° to 50° C / -22° to 122° F (Note: LS310 -30° to 55° / C- 22° to 131° F)													
Environment: Damp rated													
Lens: No lens standard. Optional non-glare optical grade Acrylic, resists common airborne water-based solvents. Other options available.													
Mount: 10 ft. Adjustable hangers included. Pendant, Flush mount options.													
Warranty: 5-year Standard Limited													
Manufacturer: Genesis Energy Technology													

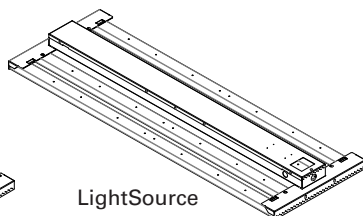
Product specifications subject to change without notice.



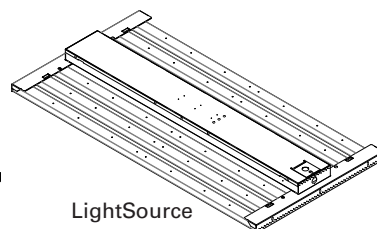
*Not all products are qualified on the DLC QPL. To view our DLC qualified products, please consult the DLC Qualified Products List at www.designlights.org/search.



LightSource
1, 2, 3-arrays.



LightSource
4, 5-arrays.



LightSource
6-arrays.



Designed & Built in USA

LightSource® I-Frame Series

Accessories

It is the responsibility of the person ordering to ensure the correct part is specified.

Power Supplies

Integrated quick connect to easily accommodate:

- Straight Blade
- Metal Clad
- Twist lock
- Winsta (WAGO)
- Mate-N-Lok
- ReLoc



Controls/Sensors

Motion sensors, ambient light sensors and timing controls are available to further improve your savings and increase the life expectancy of the fixture.



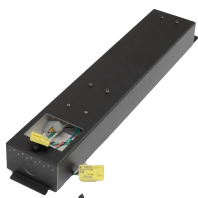
Center mount for 2, 4, 6-array configurations



Front mount for 1, 3, 5-array configurations

480V

The external transformer attaches directly onto the fixture for 480V circuits. The quick connect easily accommodates the wiring.



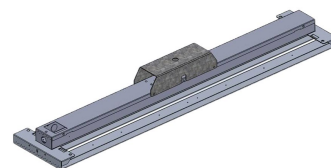
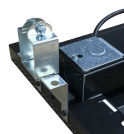
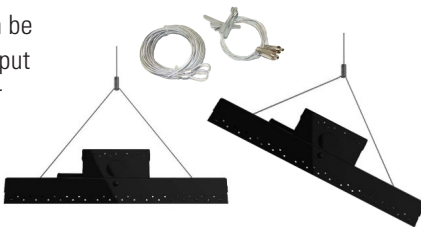
Battery Backup

External battery pack attaches directly onto the fixture. Not available in 480V.

Mounts

The standard hanging cable can be adjusted to angle the fixture to put more light where needed. Other mounting options are:

- Flush/Rigid bracket
- Uni-strut bracket
- Pendant bracket



Lens

Optical options:

- Frosted
- Clear
- Polycarbonate



FROM DESIGN TO INSTALLATION SITLER'S LED IS HERE TO HELP

Higher light quality and lower energy bills are two of the many reasons to invest in LED lights for your business. We are the premier eastern and central Iowa LED lighting distributor you can trust to be with you from start to finish. With the help of our skilled and knowledgeable professionals, you know you're getting the best product, the best service, and the best benefits.

- Trained staff of lighting experts
- Lighting evaluations and assessments including custom single page financial proposal
- We handle all rebate paper work and processing for you
- Sitler's backed warranties on all our products
- Partnerships with statewide Electrical Contractors providing quality installations
- Mobile friendly secure website (Sitler's LED ZONE) of online tools, resources and value-adds for our registered Electrical Contractors
- Onsite warehouse and delivery
- Alliant and MidAmerican Energy Partners
- Bulb recycling
- Independent testing
- Community/Charity Funds - G.I.V.E., Camp Courageous, Children's Hospital, ABC of Iowa, Jimmy V. Foundation, WCDC Inc., Iowa Donor Network, Local fairgrounds
- Locally owned and operated in Iowa



www.sitlersledsupplies.com 319-653-2123

© 2017 SPEC LS Series + Accessories Sitler's 20171010



OmegaLight® Linear Series

DESCRIPTION

OmegaLight Linear with motion sensor perfectly matches supply to demand for optimal efficiency. This delivers the lowest possible life cycle cost of operation and greatly extends the life of the fixture.

Patent-pending thermal management ensures maximum life expectancy and lumen maintenance.

Constructed of 98% pure 3105 aluminum with a durable, composite polyester exterior finish. Black is standard for optimal thermal transfer.

Options for power supplies, 480V, lenses, fixture color and mounting.



OLG10 with optional motion sensor and V-Hook with hanging cables. Other options available.



OLG18 with optional motion sensor and cord. Other options available.

AMERICAN
INNOVATION



Designed & Built in USA

SPECIFICATIONS

	OLG06	OLG09	OLG10	OLF10	OLG12	OLG13	OLG14	OLG15	OLG16	OLG17	OLG18
Nominal Lumens:	6,734	11,430	13,335	13,335	15,240	16,510	17,780	19,050	20,320	21,590	22,860
Wattage:	60	90	105	105	120	130	140	150	160	170	180
Weight:	3.86 lbs		8.250 lbs	11.000 lbs							
Dimensions:	L 46.102" W 4.000" H 3.250"		L 74.728" W 4.000" H 3.250"	L 97.750" x W 4.000" x H 3.250"							

Color Temp: 5000K

CRI: >82

Line Voltage: Universal 120-277V. 480V option.

Power Supply: Hardwire standard. Integrated quick connect to easily accommodate straight blade, metal clad, twist lock, Winsta (WAGO), ReLoc and Mate-N-Lok.

Surge Protection: Integrated 6kV transient voltage protection.

Ambient Operating Temperature: -30° to 50° C / -22° to 122° F

Environment: Suitable for damp locations

Lens: Non-glare optical grade Acrylic, resists common airborne water-based solvents. Other options available.

Mount: V-hook with 10 ft. adjustable hangers. Other options available.

Warranty: 5-year Standard Limited

Manufacturer: Genesis Energy Technology

OmegaLight® Linear Series

ORDERING INFORMATION

EXAMPLE: **OLG18-24UNCL-50BL-NSHW-MSX-V10** Lead times and costs may vary depending on options selected. Consult your sales representative for more information. Standard configuration highlighted in Gray.

OLG*					50		NS			
Model	Wattage	Length/ Sections	Voltage	Optics	Color Temp	Fixture Color	Surge	Power Supply	Motion Sensor	Mounting
OLG: OmegaLight Linear	06: 60W	14: 1x4 ft. ¹	UN: 120-277V	F1: Frosted lens	50: 5000K	BL: Black	NS: Integrated	HW: Hardwire	MSX: No Sensor ⁴	V10: V-Hook with 10' adj. cables
*OLF if 105W 8 ft.	09: 90W	16: 1x6 ft. ²	48: 480V	CL: Clear lens		WH: White		S4: Side 4-pin Winsta	MS1: 5 min/5hr	
	10: 105W	24: 2x4 ft. ³		NL: No Lens				S5: Side 5-pin Winsta	MS2: 15 min/5 hr	NHH: None
	12: 120W							SM: Side Mate-N-Lok	MS3: 30 min/5 hr	
	13: 130W								MS4: 5 min/1 hr	
	14: 140W								MS5: 15 min/1 hr	
	15: 150W								MSC: Custom	
	16: 160W								WMS: Wired for Motion	
	17: 170W								J15: 150W Jump Wire ⁵	
	18: 180W								J18: 180W Jump Wire ⁵	
									PTR: Potentiometer	

Specifications subject to change without notice.

¹ Only for 60W or 90W

² Only for 105W

³ Two (2) sections for a total of 8 ft.

⁴ No Sensor options for 60W or 90W

⁵ Only for 150W or 180W

Motion sensor operation

Standard MS1 setting is when motion is detected the fixture ramps up to maximum wattage for 5 minutes.

If no further motion, the fixture ramps down to the low setting of 5% of maximum wattage for 5 hours.

If no motion is detected after the 5 hour period, the fixture goes to off.

Accessories

All accessories are the responsibility of the person ordering to ensure the correct part is specified.

Power Supplies

Integrated quick connect to easily accommodate:

- Straight Blade
- Metal Clad
- Twist lock
- Winsta (WAGO)
- Mate-N-Lok
- ReLoc



Optional adapter plates with connectors for integrating existing controls/sensors.



www.sitlersledsupplies.com 319-653-2123

© 2017 SPEC OmegaLight Linear Series Sitler's 20171010

DESCRIPTION

OmegaLight® with motion sensor perfectly matches supply to demand for optimal efficiency. This delivers the lowest possible life cycle cost of operation and greatly extends the life of the fixture.

Patent-pending thermal management ensures maximum life expectancy and lumen maintenance.

Constructed of 98% pure 3105 aluminum with a durable, composite polyester exterior finish. Black is standard for optimal thermal transfer.

Options for power supplies, surge protection, 480V, battery backup, lenses, fixture color and mounting.

SPECIFICATIONS

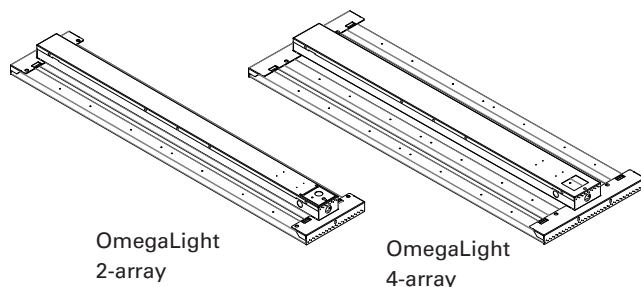
	0A212	0A215	0A218	0A436
Lumens:	16,865	20,550	22,906	45,849
Wattage:	120	150	180	360
Weight:	6.10 lbs			10.40 lbs
Dimensions:	L 46.102" x H 3.068" x W 9.910"			L 46.102" x H 3.068" x W 15.845"
Listing/Rated:	ETL			
Color Temp: 5000K				
CRI: >82				
Line Voltage: Universal 120-277V. 480V option.				
Power Supply: Hardwire standard. Integrated quick connect to easily accommodate straight blade, metal clad, twist lock, Winsta (WAGO), ReLoc and Mate-N-Lok.				
Surge Protection: Integrated 6kV transient voltage protection. External 10kA surge protection option.				
Ambient Operating Temperature: -30° to 50° C / -22° to 122° F				
Environment: Suitable for damp locations				
Lens: Non-glare optical grade Acrylic, resists common airborne water-based solvents. Other options available.				
Mount: 10 ft. Adjustable hangers included. Pendant, Flush, Uni-Strut mount options.				
Warranty: 5-year Standard Limited				
Manufacturer: Genesis Energy Technology				



0A218 with sensor, hanging cables and optional straight blade plug.



0A436 with sensor.



OmegaLight
2-array

OmegaLight
4-array

Motion sensor operation

MS1 setting example:

When motion is detected the fixture goes to maximum wattage for 5 minutes.

If no further motion, the fixture then goes down to the low wattage setting for 5 hours.

If no motion is detected after the 5 hour period, then the fixture goes to off.

Other settings are available, per the order chart on next page.

OmegaLight® LED I-Frame Series

ORDERING INFORMATION

EXAMPLE: **OA436-UNNL-50BL-NSHW-MS1A10** Lead times and costs may vary depending on options selected. Consult your sales representative for more information.
Standard configuration highlighted in Gray.

OA									
Model	Arrays Wattage	Voltage	Optics	Color Temp	Fixture Color	Surge	Power Supply	Motion Sensor	Mounting
OA: OmegaLight	212: 2-array 120W	UN: 120-277V	NL: No lens	50: 5000K	BL: Black	NS: 2.5kV int.	HW: Hardwire	MS1: 5 min/5hr	A10: 10' Adj cables
	215: 2-array 150W	48: 480V ¹	CL: Clear lens	40: 4000K	WH: White	WS: 10kA ext.	S4: Side 4-pin Winsta	MS2: 15 min/5 hr	NHH: None
	218: 2-array 180W		F1: Frosted lens				S4: Side 5-pin Winsta	MS3: 30 min/5 hr	
	436: 4-array 360W		PC: Polycarbonate				SM: Side Mate-N-Lok	MS4: 5 min/1 hr	
								MS5: 15 min/1 hr	
								MSC: Custom	
								MSX: No Sensor ²	

Specifications subject to change without notice.

¹ 480V transformer for OA436 is external

² OA436 option only

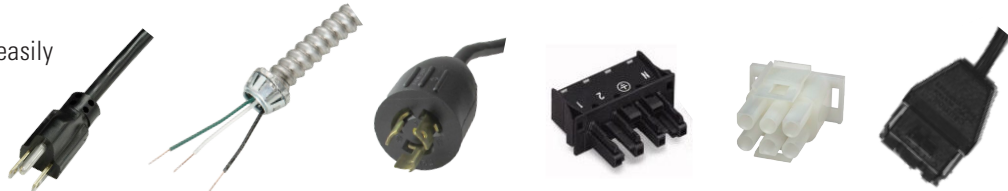
Accessories

All accessories are the responsibility of the person ordering to ensure the correct part is specified.

Power Supplies

Integrated quick connect to easily accommodate:

- Straight Blade
- Metal Clad
- Twist lock
- Winsta (WAGO)
- Mate-N-Lok
- ReLoc



Optional adapter plates with connectors for integrating existing controls/sensors.

480V

The external transformer attaches directly onto the OA436 fixture for 480V circuits. The quick connect easily accommodates the wiring.



Lens

Optical options:

- Frosted
- Clear
- Polycarbonate
- No lens



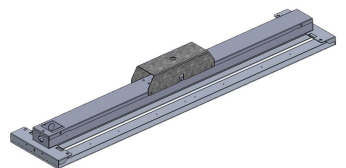
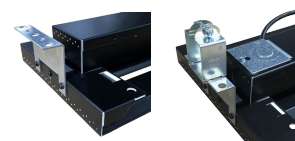
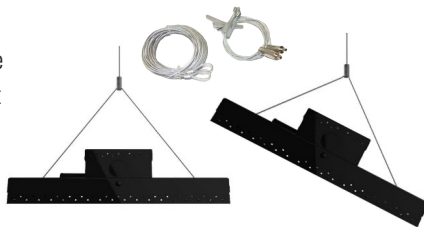
Battery Backup

External battery pack attaches directly onto the fixture. Not available in 480V.

Mounts

The standard hanging cable can be adjusted to angle the fixture to put more light where needed. Other mounting options are:

- Flush/Rigid bracket
- Pendant bracket
- Uni-Strut bracket



Sitler's
LED
SUPPLIES

www.sitlersledsupplies.com 319-653-2123

© 2017 SPEC OmegaLight-Mxx Sitler's 20171010



ThinLine® LED Architectural Troffer 2x2

DESCRIPTION

Designed for quick, easy installation featuring a sleek, contemporary, ultra-compact design. Field adjustable from 6 - 30W with optional potentiometer on back of fixture. Patent-pending insect-free lens design. Over 100,000 hour life with zero maintenance costs. Constructed of 98% pure 3105 aluminum with a durable, composite polyester exterior finish. White is standard. Troffer panels in either reflective Optical White or non-reflective Matte White allow for fast, easy installation into conventional 2x2 ft. grids. No on-site assembly required.

SPECIFICATIONS

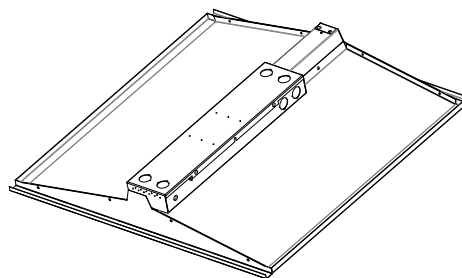
Lumens:	3,176
Wattage:	30
Weight:	6.00 lbs.
Dimensions:	L 23.750" x W 23.750" x H 4.000"
Listed/Rated:	IC
Color Temp: 4000K. 5000K option.	
CRI: >82	
Line Voltage: Universal 120-277V	
Power Supply: Hardwire standard	
Surge Protection: Integrated 2.5kV transient voltage protection	
Ambient Operating Temperature: -30° to 40° C / -22° to 104° F	
Environment: Damp rated. Insulation contact rated.	
Lens: Non-glare optical grade Acrylic white lens. Insect-free design.	
Mount: 2x2 ft. T-bar ceiling	
Warranty: 5-year Standard Limited	
Manufacturer: Genesis Energy Technology	



Designed & Built in USA



ThinLine Architectural 2x2 with its elegant, contemporary form factor designed for easy installation into 2x2 grid ceilings.



ThinLine Architectural 2x2

Tether (GTT-TL)



Hurricane clip (GHC-TL)



One GTT-TL included, attached to fixture.
Additional GTT-TL & GHC-TL may be purchased separately.

ORDERING INFORMATION

EXAMPLE: **TLA230-UNF2-40WH-PMW-HW-MSX**
Standard configuration highlighted in Gray.

Lead times and costs may vary depending on options selected. Consult your sales representative for more information.

TLA2	30	UN	F2		WH	P		HW	
Model	Wattage	Voltage	Optics	Color Temp	Fixture Color	Configuration	Panel Finish	Power Supply	Motion Sensor
TL2A: ThinLine Architectural 2x2	30: 30W	UN: 120-277V	F2: White lens	40: 4000K 50: 5000K	WH: White	P: Panel	MW: Matte white WH: Optical white gloss	HW: Hardwire	MSX: None P: Potentiometer ¹ (dimming knob on back of fixture)

Specifications subject to change without notice.

¹ Dimming down to 6W with optional potentiometer

www.sitlersledsupplies.com 319-653-2123

© 2017 SPEC ThinLine Architectural 2x2 Sitler's 20171010

DESCRIPTION

Designed for quick, easy installation featuring a sleek, contemporary, ultra-compact design. Field adjustable from 6 - 60W with optional potentiometer on back of fixture. Patent-pending insect-free lens design. Over 100,000 hour life with zero maintenance costs. Constructed of 98% pure 3105 aluminum with a durable, composite polyester exterior finish. White is standard. Troffer panels in either reflective Optical White or non-reflective Matte White allow for fast, easy installation into conventional 2x4 ft. grids. No on-site assembly required.

SPECIFICATIONS

Lumens:	2,943	3,176	4,426	5,673
Wattage:	25	30	45	60
Weight:	7.35 lbs.			
Dimensions:	L 47.750" x W 23.750" x H 4.000"			
Listed/Rated:	UL, DLC, IC			
*DLC Model #	TLA25-UNF2-40WH-Pxx TLA25-UNF2-50WH-Pxx	TLA30-UNF2-40WH-Pxx TLA30-UNF2-50WH-Pxx	TLA45-UNF2-40WH-Pxx TLA45-UNF2-50WH-Pxx	TLA60-UNF2-40WH-Pxx TLA60-UNF2-50WH-Pxx
Color Temp: 4000K. 5000K option.				
CRI: >82				
Line Voltage: Universal 120-277V				
Power Supply: Hardwire standard				
Surge Protection: Integrated 2.5kV transient voltage protection				
Ambient Operating Temperature: -30° to 40° C / -22° to 104° F				
Environment: Damp rated. Insulation contact rated.				
Lens: Non-glare optical grade Acrylic. Insect-free design. Other options available.				
Mount: 2x4 ft. T-bar ceiling				
Warranty: 5-year Standard Limited				
Manufacturer: Genesis Energy Technology				

ORDERING INFORMATION

EXAMPLE: **TLA25-UNF2-40WH-PMW-HW-MSX**
Standard configuration highlighted in Gray.

Lead times and costs may vary depending on options selected. Consult your sales representative for more information.

TLA		UN	F2		WH	P		HW	
Model	Wattage	Voltage	Optics	Color Temp	Fixture Color	Configuration	Panel Finish	Power Supply	Motion Sensor
TLA: ThinLine Architectural	25: 25W 30: 30W 45: 45W 60: 60W	UN: 120-277V	F2: White lens	40: 4000K 50: 5000K	WH: White	P: Panel	MW: Matte white WH: Optical white gloss	HW: Hardwire	MSX: None P: Potentiometer ¹ (dimming knob on back of fixture)

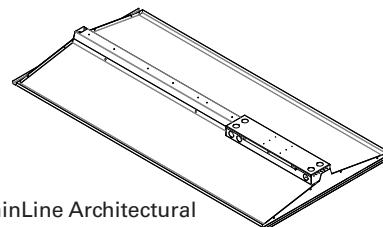
Specifications subject to change without notice.
¹ Dimming down to 6W with optional potentiometer

www.sitlersledsupplies.com 319-653-2123

© 2017 SPECThinLine Architectural 20171010



ThinLine Architectural with its elegant, contemporary form factor that will meet or exceed aesthetic and performance requirements.



ThinLine Architectural

Tether (GTT-TL)



Hurricane clip (GHC-TL)



One GTT-TL included, attached to fixture.
Additional GTT-TL & GHC-TL may be purchased separately.



*Not all products are qualified on the DLC QPL. To view our DLC qualified products, please consult the DLC Qualified Products List at www.designlights.org/search.

DESCRIPTION

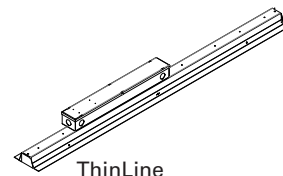
ThinLine® redefines the troffer. Designed for quick, easy installation featuring a sleek, contemporary, ultra-compact design. You can replace a typical fluorescent troffer using up to 172W with a single ThinLine that uses only 25W. Field adjustable from 6 - 60W with optional potentiometer on back of fixture. Patent-pending insect-free lens design. 100,000 hour life. Constructed of 98% pure 3105 aluminum with a durable, composite polyester exterior finish. White is standard. Optional aluminum troffer extensions in either reflective Optical White or non-reflective Matte White allow for fast, easy installation into conventional 2x4 ft. grids. No on-site assembly required.

SPECIFICATIONS

Lumens:	2,943	4,426	5,673
Wattage:	25	45	60
Weight:	ThinLine only: 3.5 lbs. ThinLine w/panels: 7.2 lbs.		
Dimensions:	ThinLine only: L 47.950" x W 4.653" x H 3.624" ThinLine w/panels: L 47.950" x W 23.653" x H 3.624"		
Listed/Rated:	UL, IC		
Color Temp:	4000K. 5000K option.		
CRI:	>82		
Line Voltage:	Universal 120-277V		
Power Supply:	Hardwire standard		
Surge Protection:	Integrated 2.5kV transient voltage protection		
Ambient Operating Temperature:	-30° to 40° C / -22° to 104° F		
Environment:	Damp rated. Insulation contact rated.		
Lens:	Non-glare optical grade Acrylic white lens. Insect-free design.		
Mount:	T-bar ceiling		
Warranty:	5-year Standard Limited		
Manufacturer:	Genesis Energy Technology		



ThinLine for use in acoustic or textured tile ceilings.



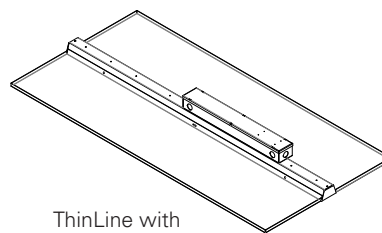
ThinLine



ThinLine with optional Matte White metal 2 x 4 ft troffer extension panels.



ThinLine with optional Optical White gloss metal 2 x 4 ft troffer extension panels.



ThinLine with optional panels

Tether (GTT-TL)



Hurricane clip (GHC-TL)



One GTT-TL included, attached to fixture. Additional GTT-TL & GHC-TL may be purchased separately.



ORDERING INFORMATION

EXAMPLE: **TL25-UNF2-40WH-WMW-HW-MSX** Lead times and costs may vary depending on options selected. Consult your sales representative for more information. Standard configuration highlighted in Gray.

TL		UN	F2		WH			HW	
Model	Wattage	Voltage	Optics	Color Temp	Fixture Color	Configuration	Panel Finish	Power Supply	Motion Sensor
TL: ThinLine	25: 25W	UN: 120-277V	F2: White lens	40: 4000K	WH: White	W: T-Bar	MW: Matte white	HW: Hardwire	MSX: None
	45: 45W			50: 5000K		P: Panel	WH: Optical white (gloss)		P: Potentiometer ¹ (dimming knob on back of fixture)
	60: 60W								

Specifications subject to change without notice.

¹ Dimming down to 6W with optional potentiometer