

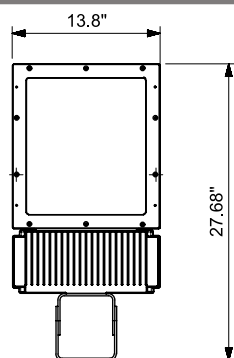
MT LED AREA LIGHT



PRODUCT DESCRIPTION

The MT LED area light is a universal and scalable outdoor LED luminaire. The MT LED area light can be customized for virtually any type of outdoor lighting application by applying one of several different mounting options to a universal body to create an Area, Flood or Wall Pack luminaire. Four installation methods including Trunnion/Yoke, Slip fitter and Pole mount. The MT LED area light can be customized for standard on off wall switching, on/off motion sensor switching or multi-level motion sensor switching. The MT LED area light also comes standard with 1-10V dimming.

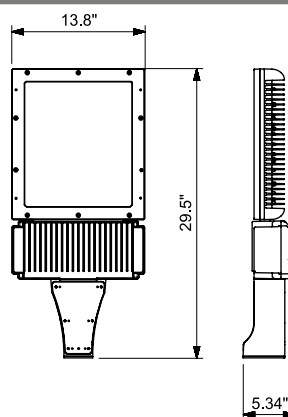
SPECIFICATION



100W, 150W, 200W

Trunnion

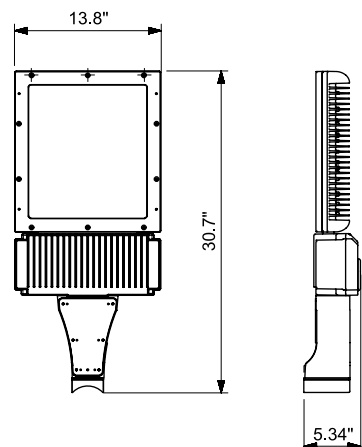
Length: 27.68"
 Width: 13.8"
 Height: 4.4"
 Max Weight
 11.6kg/25.6lbs



100W, 150W, 200W

Square Arm

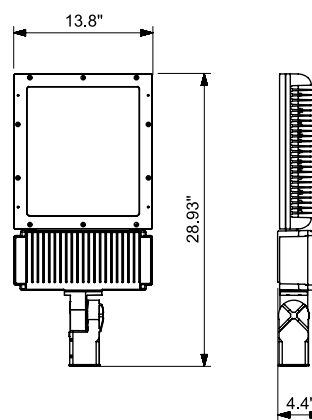
Length: 29.5"
 Width: 13.8"
 Height: 5.34"
 Max Weight
 11.6kg/25.6lbs



100W, 150W, 200W

Round Extended Arm






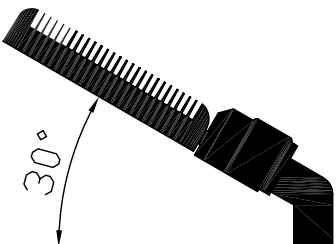
Length: 30.7"
 Width: 13.8"
 Height: 5.34"
 Max Weight
 11.6kg/25.6lbs



100W, 150W, 200W

Slip Fitter

Length: 28.93"
 Width: 13.8"
 Height: 4.4"
 Max Weight
 11.6kg/25.6lbs

| MT Line | | 100W/150W/200W | Effective Projected Area EPA (Sq. Ft.) |
|---------|-----------------------|--------------------------------------------------------------------------------------|----------------------------------------|
| | Slip Fitter |  | 0.95 |
| | Square Arm |  | 1.17 |
| | Extended Square Arm |  | 1.31 |
| | Arm For Round Pole |  | 1.25 |
| | Trunnion |  | 0.91 |
| | Trunnion in 30 Degree |  | 1.38 |

Ordering Information

Example: **MT150501-PC-TR-VW**

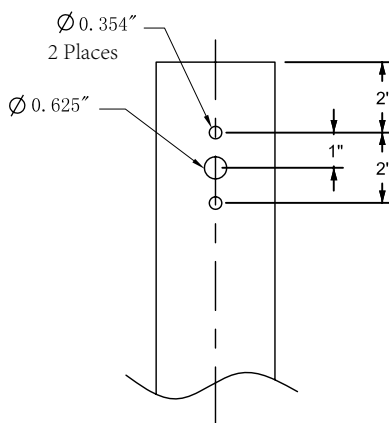
| MT | Watts | CCT | Voltage | Controls | Installation | Distribution | Finish |
|-----------|-------------------------------------------------------|----------------------------------------|----------------------------------------------------------------------------------------------|---------------------------------------------------------------------------------------------------------------------------------------------------------------------------------------------------------|-------------------------------------------------------------------|------------------------------------------------------------------------------------------------|---------------------------------------------|
| MT | 100 - 100 Watts 150 - 150 Watts 200 - 200 Watts | 30 - 3000K 40 - 4000K 50 - 5000K | 1 - 120-277V 2 - 347V ¹ 3 - 480V ² 6 - 347V/480V ³ | Blank - None MS-L7B - Motion Sensor with Black L7 Lens ⁴ MS-L7W - Motion Sensor with White L7 Lens ⁴ PC - Photoelectric Control 7P - 7 Pin PE Receptacle ⁵ | SF - Slip Fitter TR - Trunnion AR - Square Arm ⁶ | III - Type III VW - Type V Wide VN - Type V Narrow VM - Type V Middle IV - Type IV | Blank - Dark Bronze AL - Aluminum Silver |

Note:

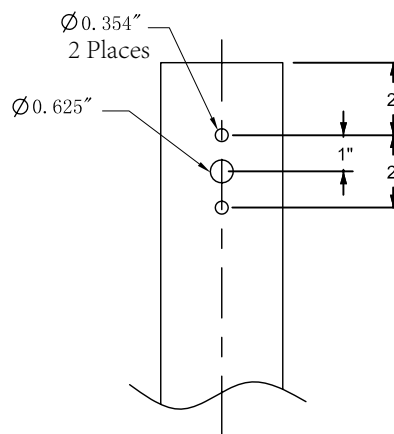
1. 347V is only used with photoelectric control .
 2. 480V is only used with photoelectric control.
 3. If choose 347/480V, please do not choose photoelectric control.
 4. The standard MS L7 lens is suitable for the mounting height of 6m (20ft) and higher.
 5. Shorting cap included.
 6. Round pole adapter need to be bought separately for a round pole.
- *Please Ask Customer Service for any special requests.

Driving Templates



DRILLING TEMPLATE ROUND POLE MOUNTING
4 inch OD Round Pole Mounting Pole



DRILLING TEMPLATE SQUARE POLE MOUNTING
4 to 6 inch OD Square Pole Mounting Pole



Accessories

| SKU | MODEL | IMAGE | DESCRIPTION |
|-------|-----------------------|--------------------------------------------------------------------------------------|-----------------------------------------------------------------------------------|
| 90202 | MT-Round Pole Adapter |  | 1.22\" arm mount adapter for round pole, suitable for MT line 100W, 150W and 200W |
| 90175 | MT-HSS |  | House-side shield for 100W, 150W, 200W MT |
| 90176 | MT-HRS |  | House-rear shield for 100W, 150W, 200W MT |

PERFORMANCE DATA

LUMEN OUTPUT

Lumen values are measured by third party certified laboratories performed in accordance with IESNA LM-79-08 as well as Lighting Facts listed.

| Watts | Lumen Output | AC Input 120V | CRI | Dist. Type | LPW |
|-------|--------------|---------------|-----|------------|-----|
| 100W | 12000lm | 0.92A | >70 | Type III | 120 |
| 150W | 18000lm | 1.38A | | Type IV | 120 |
| 200W | 21046lm | 1.84A | | Type VW | 107 |

Lumen Ambient Temperature (LAT) Multipliers

Use these factors to determine relative lumen output for average ambient temperature from -40-104°F (-40-40°C).

| Ambient | | Multiplier |
|---------|------------|------------|
| Celsius | Fahrenheit | |
| 0 | 32 | 1.02 |
| 10 | 50 | 1.01 |
| 20 | 68 | 1.00 |
| 25 | 77 | 1.00 |
| 30 | 86 | 1.00 |
| 40 | 104 | 0.99 |

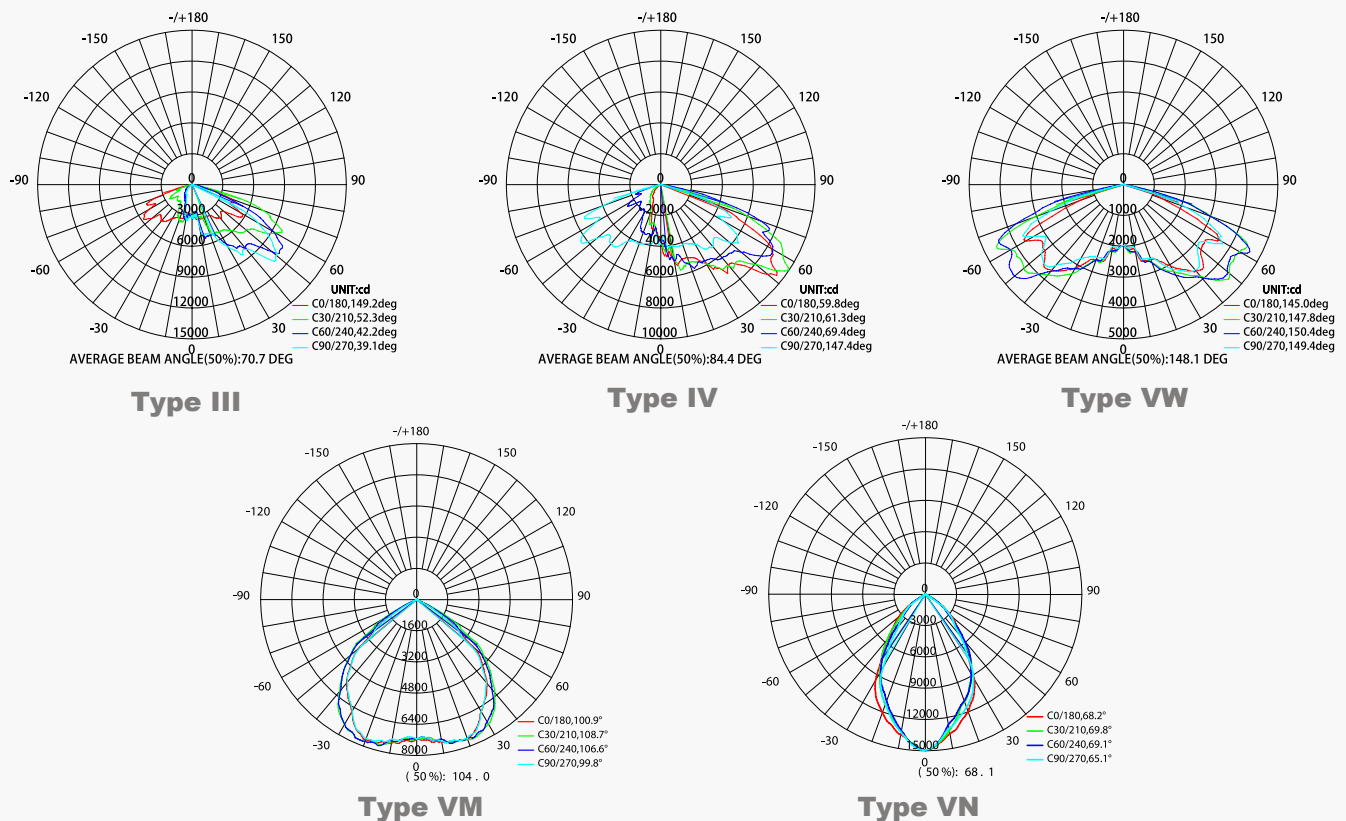
Projected LED Lumen Maintenance

Data references the extrapolated performance projections for the MT LED in a 77°F ambient, (tested per IESNA LM-80-08 and projected per IESNA TM-21-11).

| Operating Hours | 0 | 10,000 | 16,000 | 28,000 | 107,000 |
|--------------------------|-----|-----------|-----------|-----------|-----------|
| Lumen Maintenance Factor | 0.1 | 0.98(L98) | 0.96(L96) | 0.92(L92) | 0.70(L70) |

Photometry

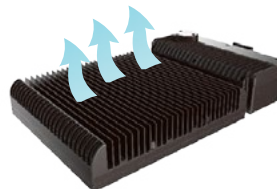
All published luminaire photometric testing performed to IESNA LM-79-08 standards by a NVLAP certified laboratory.



FEATURES



High quality die cast housing



Superior thermal management

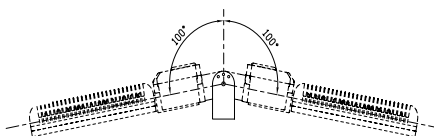


Multiple mounting options.

Trunnion option, slip fitter, wall mounted, pole mounted



Precision construction.
IP 66 rated.



180° swivel design.



Multiple controls available.
Multi-level Motion Sensor, Standard
Twistlock photocell

PRODUCT SPECIFICATIONS

CONSTRUCTION & MATERIALS

- Housing is all aluminum construction
- Special reflector design with tempered glass lens doesn't fade and discolor
- Terminal block for power input suitable for 18 AWG wire
- Luminaire sides are rugged die cast aluminum with integral, weathertight LED driver compartments and high performance heat sinks

ELECTRICAL SYSTEM

- Input Voltage: 120-277V, 347V/ 480V
- 50/60Hz
- Minimum Ambient -40°F, maximum ambient 104°F
- Power Factor: > 0.9 at full load
- Total Harmonic Distortion: < 20% at full load
- Integral 10KV surge suppression protection standard
- 1-10V Dimming

CERTIFICATIONS AND QUALIFICATIONS

- ETL Listed
- Suitable for wet location
- IP66 rated¹
- DLC Premium qualified²
- RoHS compliant

MT LED RATED LIFE

Performed to ISTMT standards

| Ambient Temp in | 73°F | 104°F | 113°F | 122°F |
|-----------------|----------|----------|---------|---------|
| 100W Rated Life | 109,000H | 103,000H | 85,000H | 58,000H |
| 150W Rated Life | 106,000H | 94,000H | 91,000H | 88,000H |
| 200W Rated Life | 93,000H | 84,000H | / | / |

Warranty

Ten year limited warranty. Full warranty terms located at www.abovealllighting.com/warrantystatements/

Note:

1. Twistlock photocell is IP65
2. DLC Premium is only for 100W 5000K in all distributions and 150W 5000K in type V. The others are DLC standard. Specifications subject to change without notice.

| System Wattage | Max THD (%) | Power Factor | Power Efficiency | Replaces/ Equiv.(MH) |
|----------------|-------------|--------------|------------------|----------------------|
| 100W | 20 | >0.9 | 93% | 400 W |
| 150W | 20 | >0.9 | 93% | 600 W |
| 200W | 20 | >0.9 | 93% | 800 W |

BUG RATING

Performed to IESNA LM-79-08 standards
by a NVLAP accredited laboratory

| Model | BUG Rating |
|--------------|------------|
| MT100501-III | B3-U0-G2 |
| MT150501-III | B3-U0-G2 |
| MT100501-VW | B3-U0-G2 |
| MT150501-VW | B4-U0-G2 |
| MT200501-III | B3-U0-G2 |
| MT200501-VW | B4-U0-G2 |

Ref#: AB10222-10503