



# GO-LED

Client: \_\_\_\_\_  
Project Name: \_\_\_\_\_

Order #: \_\_\_\_\_  
Type: \_\_\_\_\_ Qty: \_\_\_\_\_

## 2x2 & 2x4 Troffer and Parabolic LED Retrofit Kit

### Performance Data

CRI  
85

CCT  
4000K

### Projected Lifetime

218,000 Hours (L70);  
131,000 Hours (L80);  
54,000 Hours (L90)

### Dimming

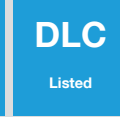
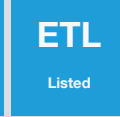
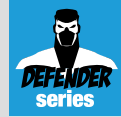
0-10V Dimming Standard,  
10% to 100%

### Operating Temperature

-20°C to +50°C Ambient

### ETL Listed

Approved for dry & damp  
locations



### Description

Deco Lighting's revolutionary and highly efficient Game Over LED Retrofit Kits feature easy installation and offer several cost-saving solutions for upgrading fluorescent troffers or parabolics to LED technology. Featuring architectural styling, these kits are compatible with both standard and narrow t-grids and provide a simple retrofit solution that will enhance the aesthetics of any building without the need to disturb the ceiling plenum. Ideal for commercial applications such as offices, classrooms, healthcare facilities, and retail spaces. All of Deco's Game Over Retrofit Kits come standard dimmable and offer the most advanced LED technology on the market with efficacies of up to 130 lumens per watt. The G-O Kits are manufactured with quality components and finishes, resulting in consistent and balanced lighting when mixing configurations in the same space. A main diffuser and slanted troffer reduce the G-O Kits' glare to produce a pleasant environment with uniform light distribution. With their visual appeal and ease of installation, Deco's family of G-O Retrofit Kits will transform and revamp any space in minutes.

### Features

- Available with Lutron control options, see Page 2 for ordering codes and information.
- High reflectance optical engine delivers main beam focus through the optically designed acrylic lens.
- Linear ribbed acrylic lens overlay balances efficiency & aesthetics.
- Reflector distributes light through both optical elements.
- Linear arrayed LED modules provide soft, but effective illumination.
- Ideal for recessed commercial applications such as offices, hospitals, and schools.
- DLC Premium Listed in Select Models (see Page 2)



### Ordering Information

#### A FIXTURE SERIES

GO-LED      Game Over Kit

#### B SIZE

22	2 x 2
24	2 x 4

#### C WATTAGE/LUMENS (SIZE 22)

18	18W/2250 <sup>1,3</sup>
25	25W/3050 <sup>1,2</sup>
35	35W/3900 <sup>1,2</sup>

#### (SIZE 24)

25	25W/3350 <sup>1,3</sup>
35	35W/4250 <sup>1,3</sup>
45	45W/5460 <sup>1,2</sup>

#### D CCT

40      4000K

#### E VOLTAGE

UNV      120-277V

#### F LENS

N      Architectural Narrow

#### G FIXTURE TYPE

K      Retrofit Kit

#### H OPTIONS

CSC	Control Scope Connected
EM	Emergency
ES	EasySense Sensor <sup>4</sup>
AR	Air Return/Supply Slots <sup>5</sup>
VW0	Lutron Vive System Enabled Fixture (External RF only) Standard 0-10V X% Driver (also available with FCJS-ECO module for ES1, ES5 options)
VWS0	Lutron Vive System Enabled Fixture (External RF w/Occ & Daylight Sensor) Standard 0-10V X% Driver (also available with FCJS-ECO module for ES1, ES5 options)
ES1	Lutron LDE1 Series EcoSystem 1% Dimming with Soft On Fade to Black
ES5	Lutron LDE5 Series EcoSystem 5% Dimming

<sup>1</sup> Delivered Lumens (4000K)

<sup>2</sup> DLC Standard Listed - See DLC matrix on Page 2

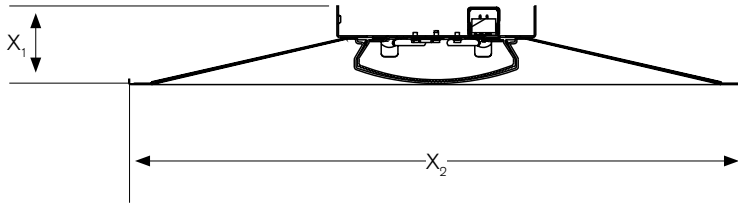
<sup>3</sup> DLC Premium Listed - See DLC matrix on Page 2

<sup>4</sup> See Page 3 for additional information on EasySense Sensor

<sup>5</sup> See Page 3 for example illustration of Air Return/Supply slots



**Dimensions**



	Inches
X <sub>1</sub>	2.92
X <sub>2</sub>	22.90

**Lutron Options**

- VW0** Lutron Vive System Enabled Fixture(External RF only) Standard 0-10V X% Driver
- VWS0** Lutron Vive Wireless Fixture (External RF w/Occ & Daylight Sensor) Standard DALI X% Driver
- ES1** EcoSystem digital control, Hi-lume 1% EcoSystem LED driver with Soft-on, Fade-to- Black. Ideal for conference rooms, restaurants, lobbies, ballrooms, and lecture halls. Benefits include: All benefits of the ES5 series plus beautiful, smooth flicker-free dimming down to 1% and a Soft-on, Fade-to- Black™ feature, which provides an incandescent-like experience when transitioning from off to 1% and vice versa.
- ES5** ES5 - EcoSystem digital control, 5-Series EcoSystem LED driver. Flicker-free dimming from 100% to 5%.

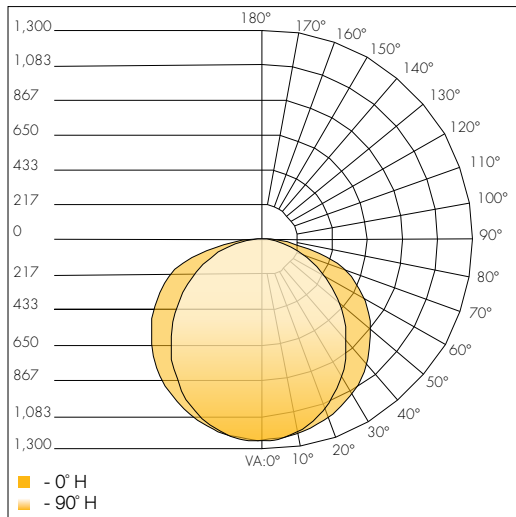
Lutron Vive Lighting Control System (applies to VW0 and VWS0 options)

Lutron Vive is a revolutionary wireless lighting control solution for new and existing commercial buildings, combining a variety of lighting control strategies with controls and sensors to maximize efficiency and system flexibility. A Lutron Vive lighting control solution can reduce energy consumption by 60% or more by employing the following strategies:

- Occupancy/vacancy sensing turns lights on when occupants are in a space and off when they vacate the space.
- Daylight harvesting dims electric lights when daylight is available to light the space.
- Scheduling provides pre-programmed changes in light levels based on time of day.
- Demand response automatically reduces lighting loads during peak electricity usage times.
- Plug load control automatically turns off loads after occupants leave a space.
- High-end trim sets the maximum light level based on customer requirements in each space.
- Personal dimming control gives occupants the ability to adjust the light level.
- HVAC integration controls heating,ventilation, and air conditioning systems through contact closure, or BACnet protocol.
- System Optimization Service from Lutron identifies important lighting control adjustments to save additional energy and create a more productive work environment on an ongoing basis.

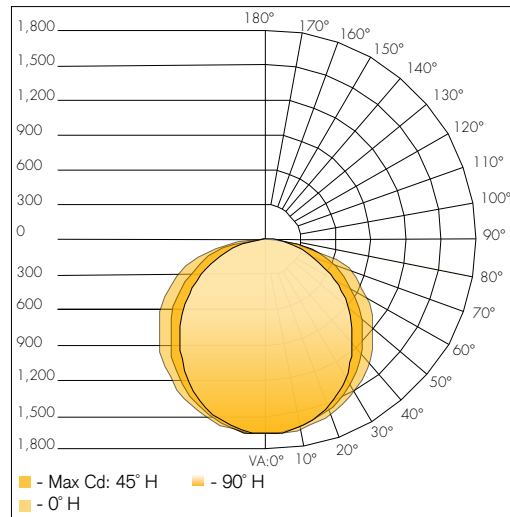
**Photometrics**

Polar Graph - 2 x 2 35W 4000K



Delivered Lumens: 3786  
CRI: 85

Polar Graph - 2 x 4 45W 4000K



Delivered Lumens: 5462  
CRI: 85

**DLC Listing**

	2 X 2			2 X 4		
	18W	25W	35W	25W	35W	45W
4000K	X <sup>P</sup>	X	X	X <sup>P</sup>	X <sup>P</sup>	X

<sup>P</sup>DLC Premium Listed Model

**Talk to one of our LED consultants today!**  
**(800) 426-3938 • (319) 653 3198**

**Sitler's**  
**LED**  
**SUPPLIES**  
info@sitlersupplies.com  
www.sitlersledsupplies.com

Deco Lighting practices a program of continuous product development, and as a result product specifications change frequently. We reserve the right to change product specifications without notice. Contact Deco for the latest product information.

### EasySense Sensor

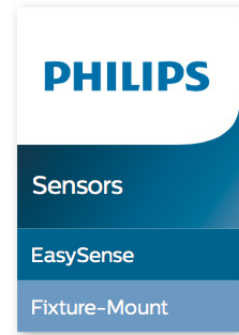
The Philips EasySense fixture-mount sensor is the ideal solution for per-fixture, stand-alone control of new light fixtures. It combines occupancy sensing, daylight harvesting and task tuning in a single, compact package for easy OEM fixture assembly. EasySense operates with the established Xitanium SR driver standard to make a simple two-wire connection between sensor and driver, thus eliminating the need for multiple components and auxiliary devices. The result is a cost effective and easy-to-design-in solution ideal for energy-savings and code-compliance strategies. An intuitive app makes configuration during installation fast and easy using SimpleSet.

#### Features

- Occupancy sensing, daylight harvesting and task tuning in one device
- Compact size
- Operates in conjunction with Philips Xitanium SR drivers
- Preset with most common parameters to work right out-of-the-box with no commissioning
- Configuration – if desired – using SimpleSet (NFC) via intuitive smartphone-based app

#### Benefits

- Combines functionality to reduce need for multiple components
- Fits into existing and new-design fixtures
- Easy field configuration of control parameter • Quick institutional tuning in the field to optimize light and power levels
- Compatible with Philips Xitanium SR drivers • Cost-effective solution for energy-savings and code-compliance strategies
- 5-year limited system warranty with Philips Advance Xitanium LED drivers



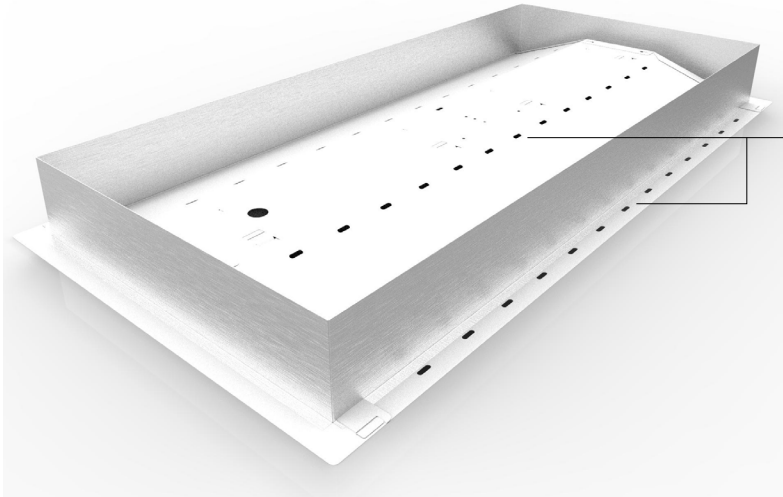
#### Applications

- Conference rooms • Individual offices
- Open offices
- Classrooms
- Storage and break areas
- Restrooms
- Lobbies

View Full Sensor Spec Sheet Below:

[http://www.getdeco.com/wp-content/themes/deco-digital/pdf/EasySense\\_Sensor.pdf](http://www.getdeco.com/wp-content/themes/deco-digital/pdf/EasySense_Sensor.pdf)

### Air Supply/Return



Air Supply/Return slots in Housing



Talk to one of our LED consultants today!  
 (800) 426-3938 • (319) 653 3198

info@sitalersupplies.com  
 www.sitalersledsupplies.com

Deco Lighting practices a program of continuous product development, and as a result product specifications change frequently. We reserve the right to change product specifications without notice. Contact Deco for the latest product information.